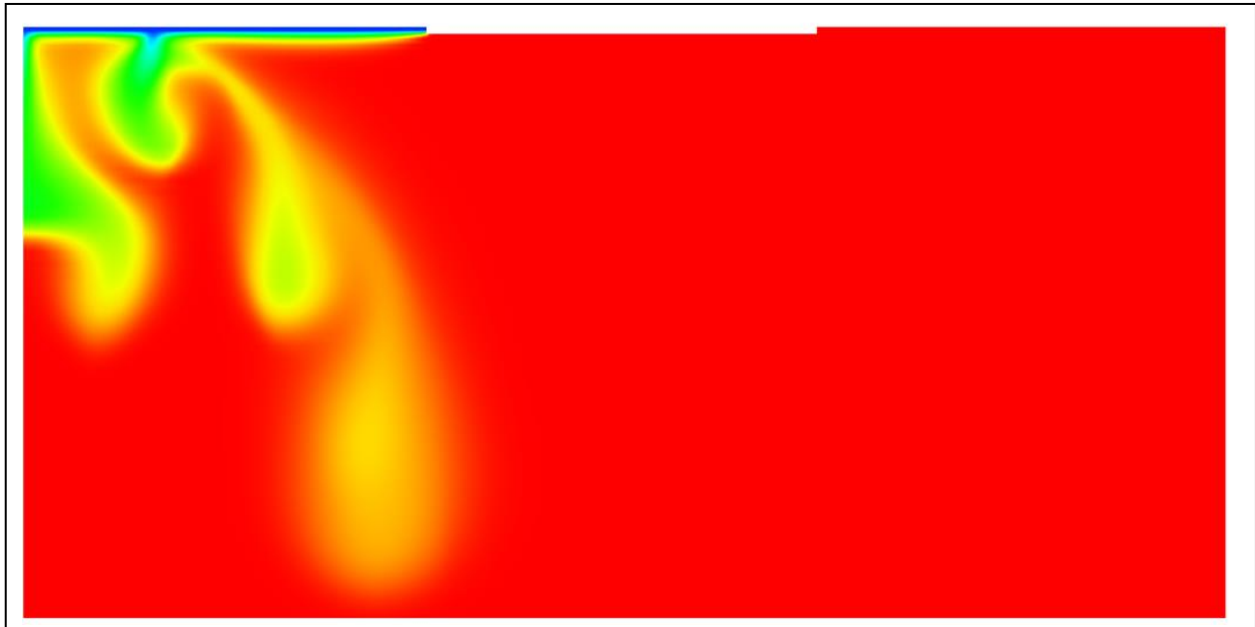


GMS 10.4 Tutorial

SEAWAT – Hele-Shaw Experiment

Simulate the Hele-Shaw Salt Lake experiment using SEAWAT in GMS



Objectives

Construct and run a SEAWAT model in GMS using the grid approach. The model will mimic the Hele-Shaw salt lake experiment.

Prerequisite Tutorials

- MT2DMS – Grid Approach

Required Components

- Grid Module
- MODFLOW
- MT3DMS
- SEAWAT

Time

- 10–20 minutes



1	Introduction	2
2	Getting Started	4
2.1	Importing the existing model.....	4
3	The SEAWAT Model	5
3.1	Viewing the SEAWAT Inputs.....	5
3.2	Saving and running the model.....	6
4	Viewing the Solution	6
4.1	Creating an Animation.....	7
5	Conclusion	8

1 Introduction

The SEAWAT model is described as:

...a generic MODFLOW/MT3DMS-based computer program designed to simulate three-dimensional variable-density groundwater flow coupled with multi-species solute and heat transport. The program has been used for a wide variety of groundwater studies including those focused on brine migration in continental aquifers as well as those focused on saltwater intrusion in coastal aquifers. SEAWAT uses the familiar structure of MODFLOW and MT3DMS.¹

This tutorial explains how to perform a SEAWAT simulation within GMS by importing an existing SEAWAT simulation, running the simulation, and viewing the results. The first problem being solved in this tutorial is the salt lake problem used in the SEAWAT manual.²

The design for the Hele-Shaw experiment is shown in [Figure 1]. Uniform evaporation of pure water occurs along line segment *AB*, leaving behind a salt-saturated fluid with a concentration of 110 grams per liter. Fluid with a potassium sulfate concentration of 84 grams per liter is injected at a constant head along segment *CD*. The remaining boundaries are impermeable. To prevent the fingers from forming too rapidly, the clear plates were tilted at an angle (ϕ) of 5 degrees from the horizontal. This tilt is represented in SEAWAT-2000 by calculating input variables (hydraulic conductivity and specific storage) with the component of gravity (g) that is parallel with the plate ($g \sin \phi$). [Figure 2] contains a list of the input variables for the salt lake problem.³

¹ SEAWAT: A Computer Program for Simulation of Three-Dimensional Variable-Density Ground-Water Flow and Transport. U.S. Geological Survey. October 7, 2015.

<http://water.usgs.gov/ogw/seawat/>. Accessed July 6, 2017. (Archived by WebCite at <http://www.webcitation.org/6ioGQwVBw>)

² Langevin, Christian D.; Shoemaker, W. Barclay; and Guo, Weixing (2003). *MODFLOW-2000, the U.S. Geological Survey Modular Ground-Water Model—Documentation of the SEAWAT-2000 Version with the Variable-Density Flow Process (VDF) and the Integrated MT3DMS Transport Process (IMT)*; U.S. Geological Survey Open-File Report 03-426, 43 p. http://fl.water.usgs.gov/PDF_files/ofr03_426_langevin.pdf.

³ Ibid, p. 24.

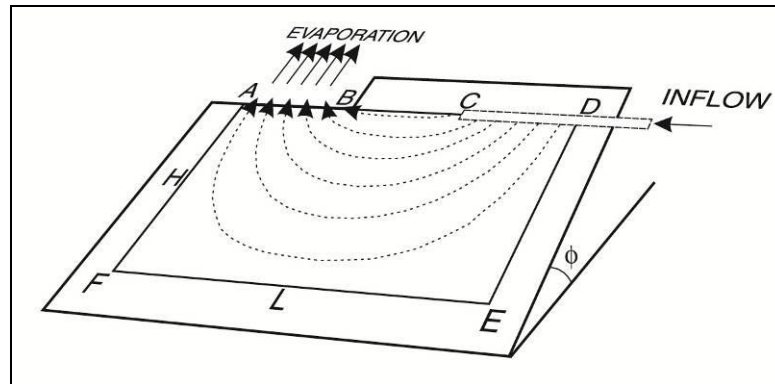


Figure 1 Flow model from SEAWAT manual⁴

Model input parameter	Variable (if applicable)	Value
Experiment height	H	75 mm
Experiment length	L	150 mm
Evaporation length	L_e	50 mm
Plate spacing	b_{gap}	0.2 mm
Equivalent freshwater hydraulic conductivity	$K_f = \frac{b_{gap}^2 \rho_f g \cdot \sin \phi}{12\mu}$	3.05 mm/s
Porosity	θ	1
Inflow fluid density	ρ_{in}	1.0646 g/cm ³
Saturated fluid density	ρ_{sat}	1.0814 g/cm ³
Diffusion coefficient	D_m	9×10^{-4} mm/s
Cell angle to the horizontal	ϕ	5 degrees
Initial evaporation rate		1.03×10^{-3} mm/s
Recharge rate		1.03×10^{-3} mm/s
Inflow fluid concentration	C_{in}	84 g/L
Saturated fluid concentration	C_{sat}	110 g/L
Fluid dynamic viscosity	μ	1.1×10^{-3} kg/m·s
Density change per concentration change	$\delta\rho/\delta C$ or DENSESLP*	0.646
Water compressibility	β_w	4.5×10^{-10} kPa ⁻¹
Equivalent freshwater specific storage	$S_f = \rho_f g \theta \beta_w \sin \phi$	3.8×10^{-10} mm ⁻¹
Longitudinal dispersivity	α_L	9×10^{-7} mm
Transverse dispersivity	α_T	9×10^{-7} mm
Acceleration due to gravity	$g \sin \phi$	855 mm/s ²

*Calculated based on the concentration and density of the inflow fluid and saturated fluid.

Figure 2 Input parameters and values for Salt Lake Hele-Shaw experiment and SEAWAT 2000 simulation⁵

⁴ Langevin, et al (2003), p. 25.

⁵ Ibid, p. 25.

“The SEAWAT-2000 model was run for 24,000 seconds (400 minutes) using 60 second transport time steps. The variable-density flow equation was solved using the PCG solver, and the implicit finite-difference method was used with the GCG Package to solve the transport equation.”⁶


2 Getting Started

Do the following to get started:

1. If necessary, launch GMS.
2. If GMS is already running, select *File / New* to ensure that the program settings are restored to their default state.

2.1 Importing the existing model



Start with a SEAWAT model that has already been created.

1. Click **Open**  to bring up the *Open* dialog.
2. Select “MODFLOW Name Files (*.mfn;*.nam)” from the *Files of type* dropdown.
3. Browse to the *saltlake* folder and select “seawat.nam”.
4. Click **Open** to exit the *Open* dialog and open the *SEAWAT Translator* dialog.
5. Click **OK** to begin importing the model.

The *SEAWAT Translator* should run and end with a message saying that SEAWAT terminated successfully.

6. Click **Done** to finish importing the file and close the *SEAWAT Translator* dialog.

A grid should appear in the Main Graphics Window.

7. Switch to **Front View** .
8. **Frame**  the project.

The view of the grid should appear with symbols representing specified head boundary conditions (Figure 3). SEAWAT uses a combination of MODFLOW and MT3DMS inputs; the MODFLOW and MT3DMS portions of the SEAWAT inputs are edited in GMS through the MODFLOW and MT3DMS interfaces, respectively. The SEAWAT interface includes the inputs that are specific to SEAWAT.

⁶ Langevin, et al (2003), p. 28.

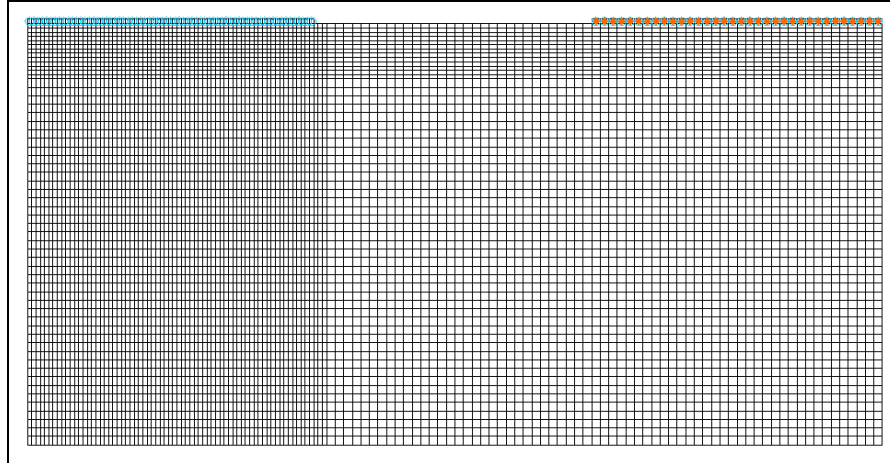


Figure 3 Front view of imported SEAWAT model

3 The SEAWAT Model

3.1 Viewing the SEAWAT Inputs

Now to examine the inputs to the SEAWAT model.

1. Select *SEAWAT / Global Options...* to open the *Global Options* dialog.

Notice that this SEAWAT simulation includes transport and that *Variable Density Flow (VDF)* is turned on.

2. Click **OK** to exit the *Global Options* dialog.
3. Select *SEAWAT / VDF Package...* to open the *SEAWAT VDF Package* dialog.

The VDF package controls how density is calculated by SEAWAT.

4. In the *Fluid density calculation* section, notice that Fluid density calc (MT3DRHOFLG) is set to “1”.

This indicates that the concentration of "species_1" is used in the density calculations. *Reference fluid density (DENSREF)* is set to the value of the incoming fluid density shown in Figure 2. *Density/conc. slope (DRHODC)* is set to the value of density change per concentration change shown in Figure 2.

5. Notice that *Flow/transport coupling (NSWTCPL)* is set to “1”.

This indicates that the flow and transport are explicitly coupled. Refer to the SEAWAT documentation for more information on how these inputs affect the SEAWAT model.⁷

⁷ Langevin, Christian. D.; Thorne, Daniel T., Jr.; Dausman, Alyssa M.; Sukop, Michael C.; and Guo, Weixing. (2007). “SEAWAT Version 4: A Computer Program for Simulation of Multi-

- Click **OK** to exit the *SEAWAT VDF Package* dialog.

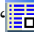

3.2 Saving and running the model

Now to save the model with a new name and run the model.

- Select *File / Save As...* to bring up the *Save As* dialog.
- Select “Project Files (*.gpr)” from the *Save as type* drop-down.
- Enter “Saltlake.gpr” as the *File name*.
- Click **Save** to save the project under the new name and close the *Save As* dialog.
- Select *SEAWAT | Run SEAWAT...* to bring up the *SEAWAT* model wrapper dialog.
- When the simulation is finished, turn on *Read solution on exit* and *Turn on contours (if not on already)*.
- Click **Close** to import the solution and close the *SEAWAT* dialog.

4 Viewing the Solution

Now to view the results of the SEAWAT model run.

- Select “ species_1” under “ SaltLake (MT3DMS)” in the Project Explorer.
- Select time step 8 (it has a value of “23215.0”).

The solution should appear similar to Figure 4.

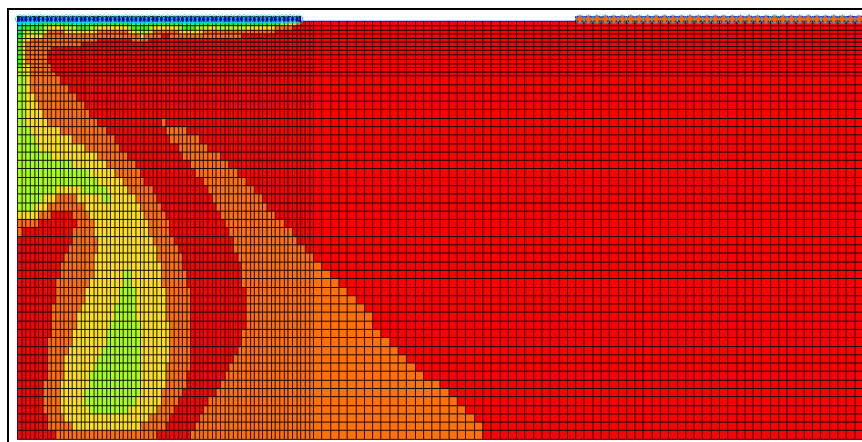


Figure 4 SEAWAT solution

Species Solute and Heat Transport” in U.S. Geological Survey *Techniques and Methods Book 6*, Chapter A22, p. 13. <https://pubs.usgs.gov/tm/tm6a22/pdf/tm6A22.pdf>.

The model results look very similar to the result from the real experiment (Figure 5).

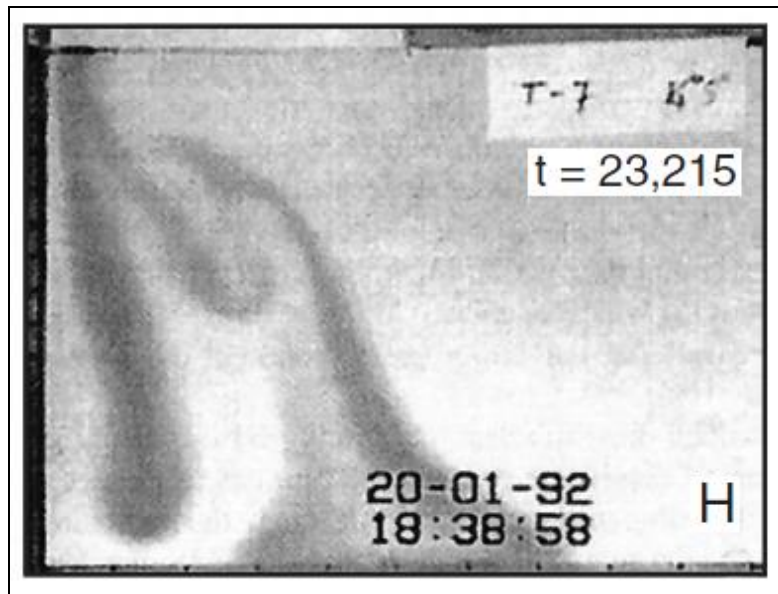


Figure 5 Result from Hele-Shaw experiment of the Salt Lake problem at time step 23215s⁸

If desired, step through the time steps of the solution.

4.1 Creating an Animation


Now to create an animation of the concentration over time.

1. Select *Display / Animate...* to bring up the *Options* page of the *Animation Wizard* dialog.

The defaults should work fine for creating an animation.

2. Click **Next** to go to the *Dataset* page of the *Animation Wizard* dialog.
3. Click **Finish** to close the *Animation Wizard* dialog and create the animation.

When the animation is finished rendering, it will open in the external *Play AVI Application* window and begin playing.

4. When done reviewing the animation, close  the *Play AVI Application* window and return to GMS.

Feel free to change the contour options or rerun SEAWAT with different options and animate the results.

⁸ Langevin, et al (2003), p. 26.

5 Conclusion

This concludes the “MODFLOW – SEAWAT Hele-Shaw Experiment” tutorial. The following key concepts were discussed and demonstrated in this tutorial:

- SEAWAT, combining both MODFLOW and MT3D, can be used to solve variable density groundwater flow and solute transport equations.
- Import existing SEAWAT models into GMS easily.
- GMS has multiple options for viewing the results of a SEAWAT model run.